A photograph of a steel foundry. Molten metal is being poured from a ladle into a container. The scene is illuminated by the bright orange and yellow light of the molten metal, contrasting with the dark blue background of the industrial setting. A crane hook is visible in the upper left.

STATE-OF-THE-ART
HI-TECH
STEEL FOUNDRY



TEXMACO RAIL & ENGINEERING LTD.

A PLANT VIEW



High Pressure Moulding Line

Texmaco, founded in 1939 by the late Dr. K.K.Birla, is a premier multi-discipline, multi-unit, engineering complex in Kolkata, with five factories situated about 11 km from the down-town, extending over nearly 170 acre. It is a leader in the manufacture of Railway Steel Castings. Besides, it is a leading player in the field of design and manufacture of Railway Freight Cars, Hydro-Mechanical Equipment and Industrial Structural for Thermal Power Stations and Steel Plants, Flyovers/Bridges. Texmaco also manufactures Process Equipment like Sugar Machineries, Industrial Boilers, Pressure Vessel etc. It has diversified into the assembly and sale of Agro machineries and Road Repairing Equipment. The Company has built strong credentials through its outstanding performance in prestigious, national and international projects.

Texmaco – An industry for industries.



Hot Metal Pouring

Texmaco's world-class, state-of-the-art steel foundry, with an annual capacity of 30,000 tonnes of quality steel castings, is the largest in India. The plant was designed and supplied by the world-renowned Kunkel Wagner of Germany on a turnkey basis and is fully automatic, PLC-controlled. It comprises a High Pressure Moulding Line and Computerised Sand Plant, supported by a new generation Centrifugal Sand Mixer with moisture control, and online Sand Testing Equipment, a unique facility, comparable to any international plant.

Accreditations

- ISO 9001:2008 - IS 12117-96
- 'A' Class foundry by the Indian Railways
- AAR (Association of American Railroads) – The only foundry accredited in India
- 'Foundry of the year 2009' award by Institute of Indian Foundrymen (*Affiliated member of World Foundry Organisation*)

INFRASTRUCTURE FACILITIES

The plant has the capability to produce 50 to 5,000 kg of individual castings in line with various national and international specifications and stringent quality requirements of customers.

CAPABILITIES



Moulding

The facility comprises a High Pressure Moulding Line with the flexibility of application of differential pressure through 84 hydraulic cylinders leading to uniform hardness throughout the mould surface.

Pattern making

In-house facilities for design, lay-out and fabrication of new Patterns and Core Boxes, with a huge storage facility of about 25,000 sq ft.



Melting

Liquid steel is produced in one 12/15 tonnes and two 5 tonnes Direct Electric Arc Furnaces as per desired metal specifications. The samples are transferred to a laboratory through a pneumatic transportation system resulting in quickest chemical analysis feedback.



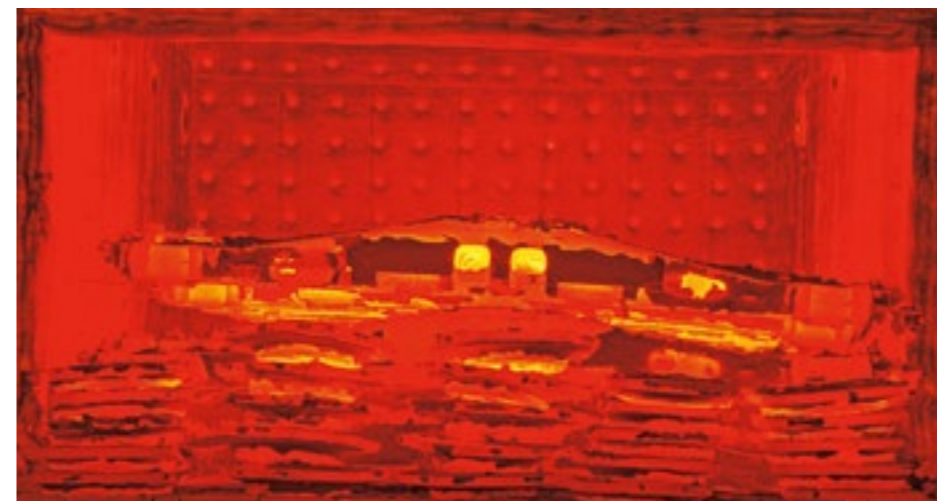
Core making

It comprises a carousel type mechanised core making system assisted by a continuous Sand Mixer.



Heat treatment

It comprises furnaces with capacity ranging from 5 tonnes to 30 tonnes each. Depending on the desired physical properties, the castings undergo different heat treatments such as Annealing, Normalising, Forced Air Cooling, Water Quenching, Tempering, etc.



QUALITY ASSURANCE



Spectrometer

The foundry has institutionalised stringent QA programmes to ensure flawless, hi-tech, quality castings that are supplied to esteemed clients, domestic and overseas, in strict conformity with their demanding specifications.

Sand Testing Facilities



Self Sand Testing Machine, Permeability Meter, Core-Determinater, Sieve Shaker and Clay Testing Machine

Chemical Testing Laboratory



Metallurgical Microscope

Physical Testing Equipment



UTM Rockwell Hardness Testing Machine



Sub-Zero Impact Testing Machine



Brinell Hardness Testing Machine

Non-Destructive Testing Equipment



Tup Hammer



UT Machine

PRODUCTS



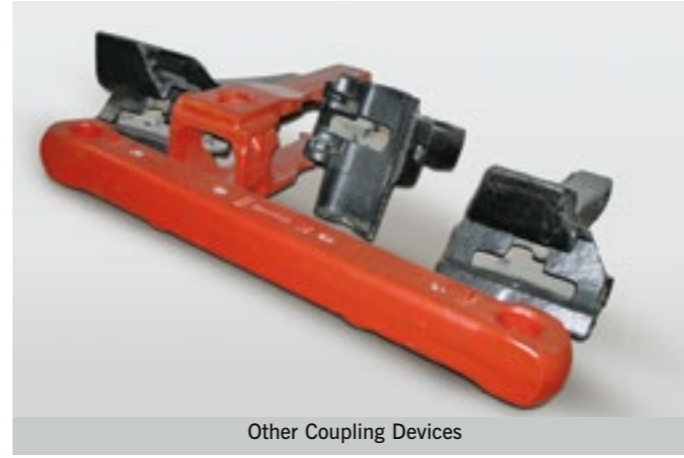
Coach Coupler



NTT Coupler



Draft Gear



Other Coupling Devices



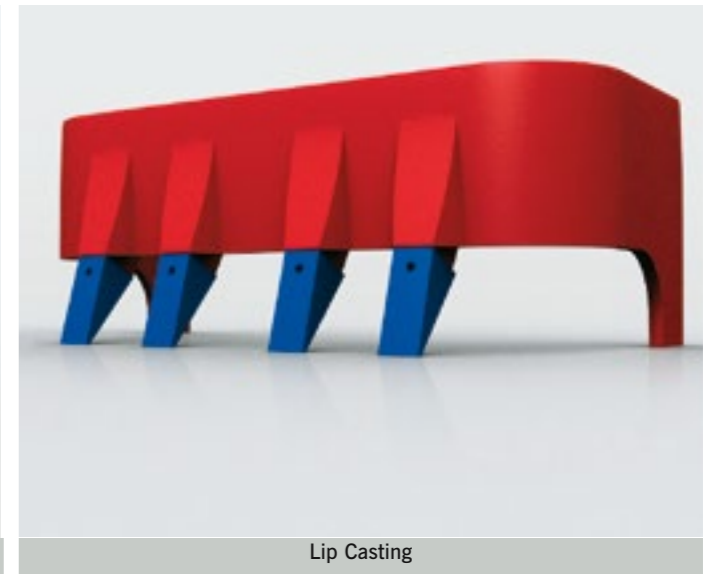
Axle Box Housing



CMS Crossing



CASNUB Bogie



Lip Casting



Heavy Duty Shroud



Standard Shroud



Anode Yoke



Flange

OUR ENVIRONMENT



Greenery and waterbody in the foundry compound

OUTLOOK

Aspire to be globally acclaimed as the most reliable source of premium products and services with competitive price and on-time delivery.

AWARDS AND ACCOLADES

Pollution Control Equipment



At Texmaco, a clean and pollution-free atmosphere is of paramount importance. The Company has installed effective pollution control equipment, provided an efficient Dust Extraction System on Arc Furnace, Sand Plant. The Company's relentless thrust on technological up-gradation and alternative energy minimised the environmental impact of the operations. The Company has made a massive investment in creating a waterbody, planting trees, bushes, hedges and lush green parks to make its workplace eco-friendly and relaxing with a work-life balance.



Association of American Railroads (AAR)



ISO:9001-2008



IIF Trophy and Certificate 2009

OTHER PRODUCTS



BCNHL Wagon Rake



Hydro-mech Gates at Tala, Bhutan



Horton Sphere for ISRO



Oxygen Buffer Vessel



Power Tiller 'Texmaco Dhanwan'



'Nu-phalt' Road Repairing Machine



TEXMACO RAIL & ENGINEERING LTD.

Corporate Office: Birla Building, 9/1 R.N. Mukherjee Road,
Kolkata 700001 • Ph: 91 33 22425356 • Fax: 91 33 22425833

Works: Belgharia • Agarpara • Sodepur • Panihati

Ph: 91 33 25691500 • Fax 91 33 25412448/2452 • Email: texmail@texmaco.in

Branch Offices: New Delhi • Mumbai • Chennai

Website: www.texmaco.in